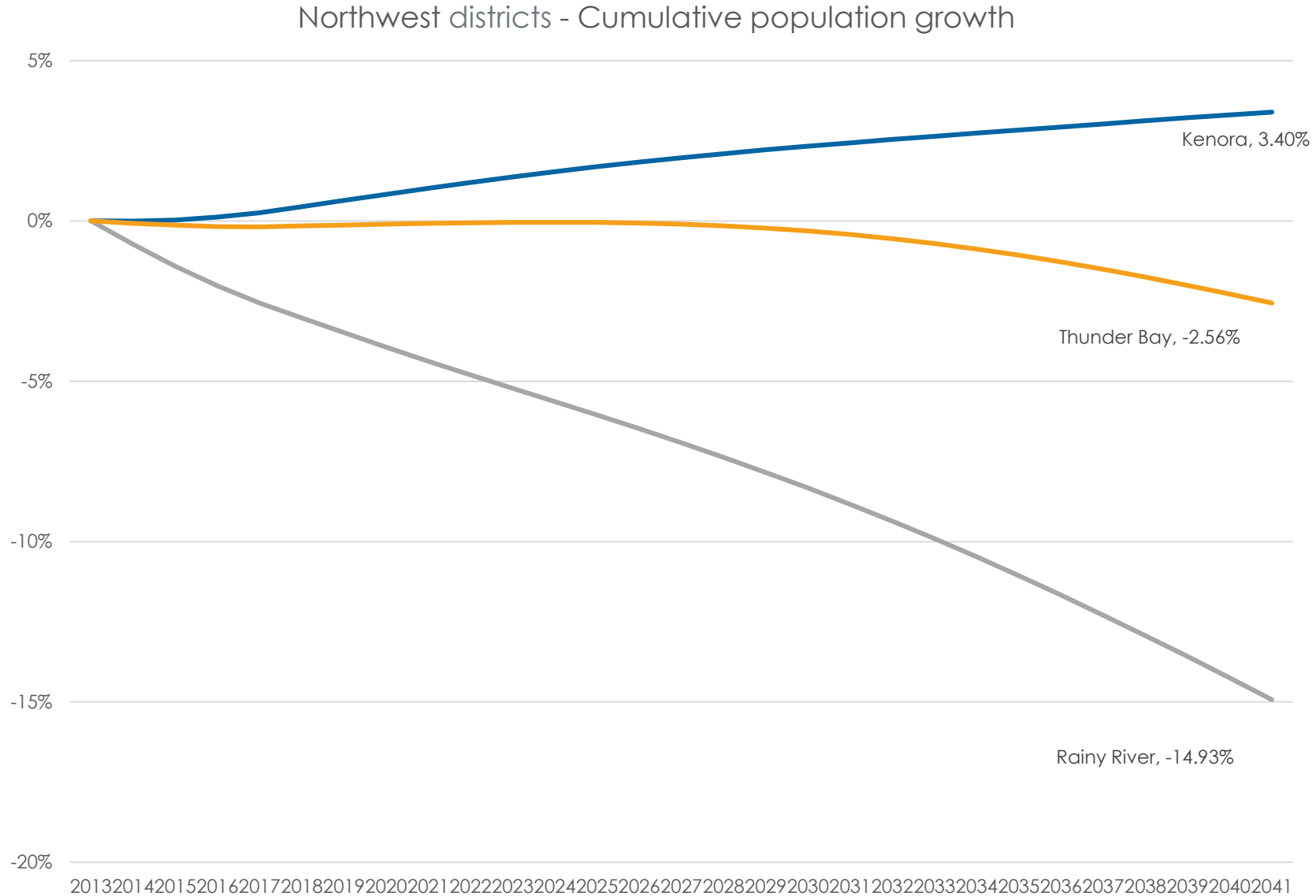


“THE FUTURE OF NORTHWESTERN ONTARIO... BE PART OF THE SOLUTION”

COMMON VOICE NORTHWEST
PRESIDENT & CEO, CHARLES CIRTWILL
23 SEPTEMBER 2016, THUNDER BAY



Population Projections



Source: Author's calculations based on Ontario, Ministry of Finance, "Ontario Population Projections, 2013-2041" (Toronto, 2014).

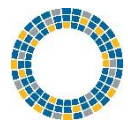
Understanding DDR

Sustainable



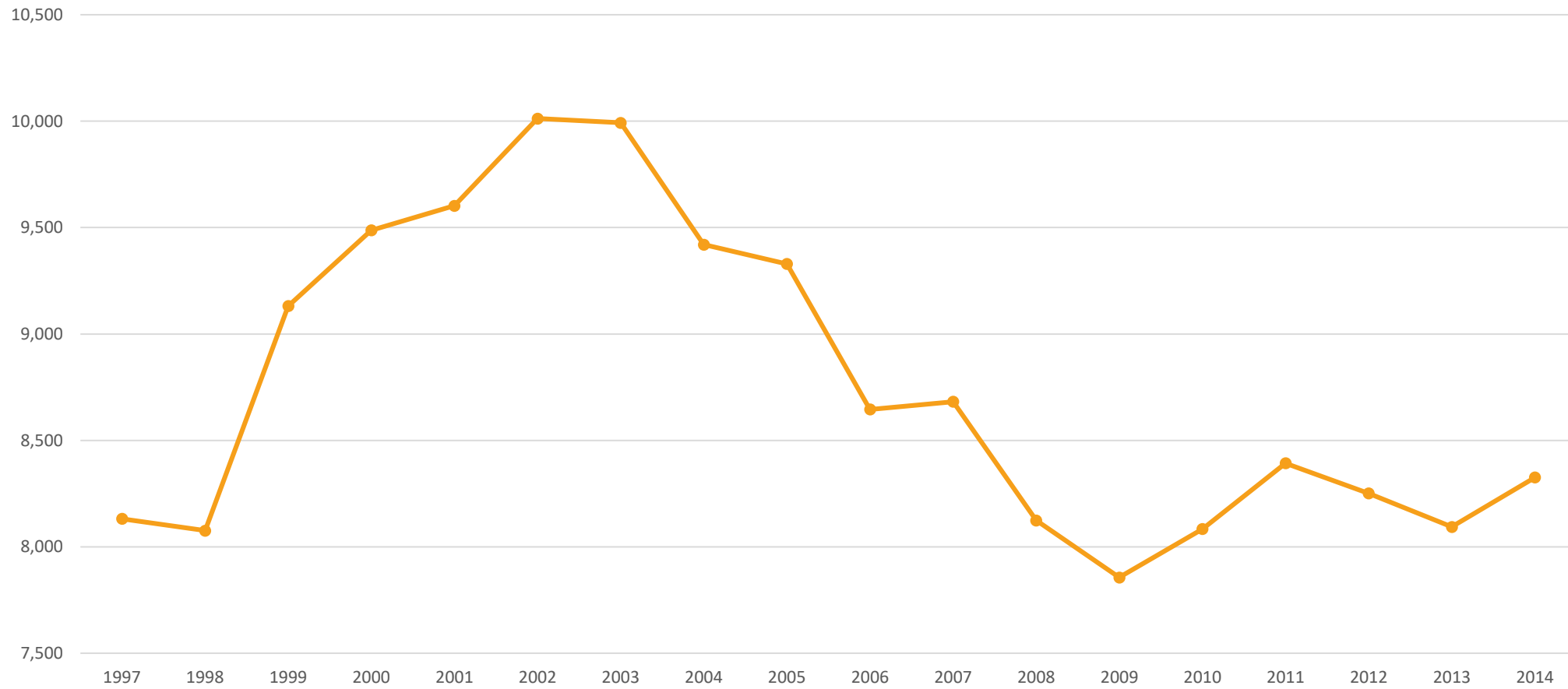
Unsustainable





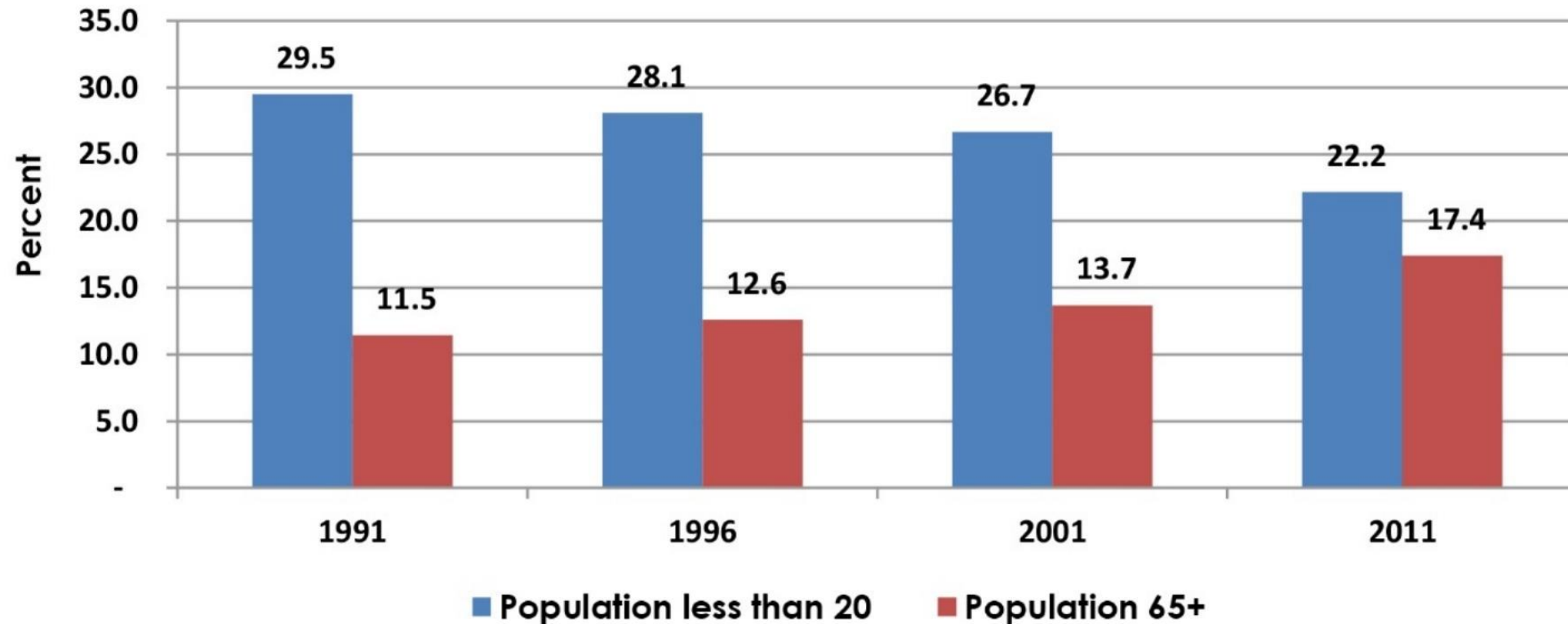
But things are going, better, aren't they?

Northwest Ontario – GDP 2007 chained dollars, millions



Source: Author's calculations based on Statistics Canada, CANSIM database, tables 282-0125 and 379-0030.

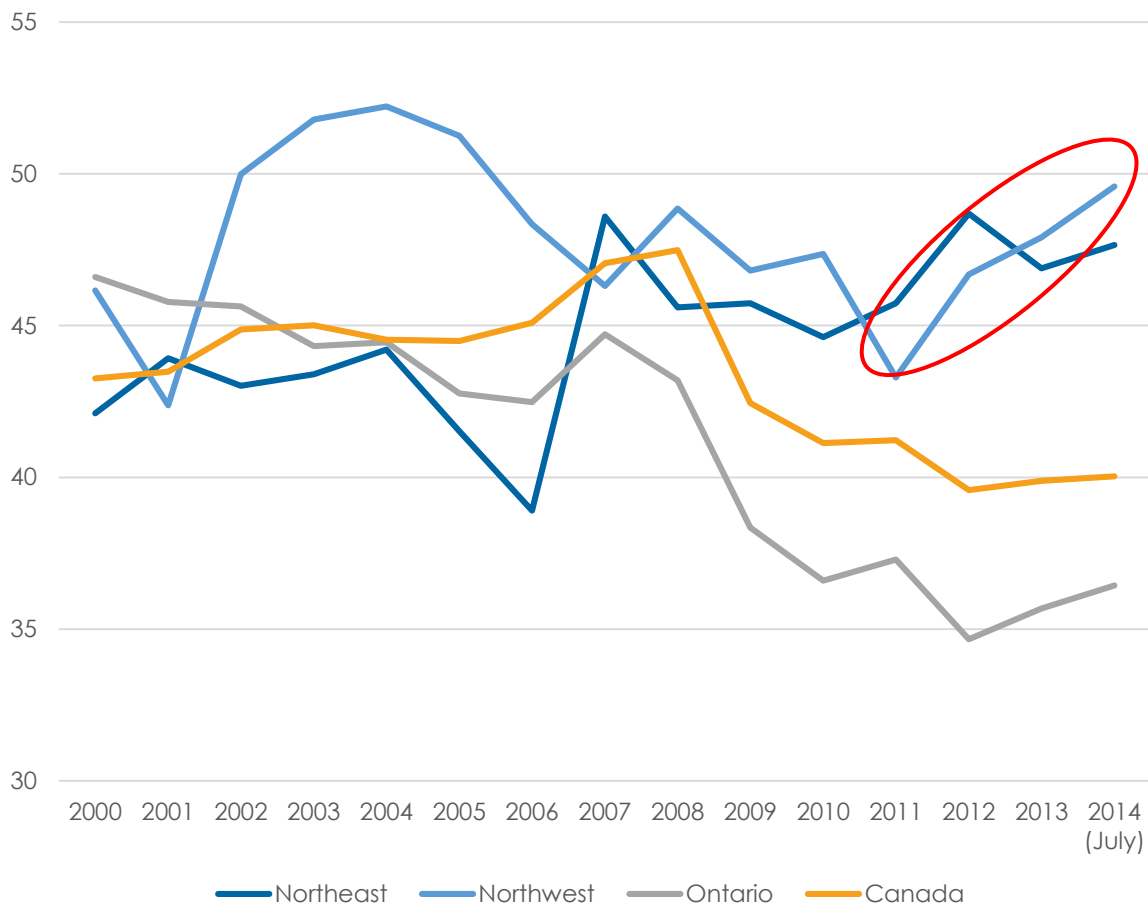
NW Population under 20 or over 65



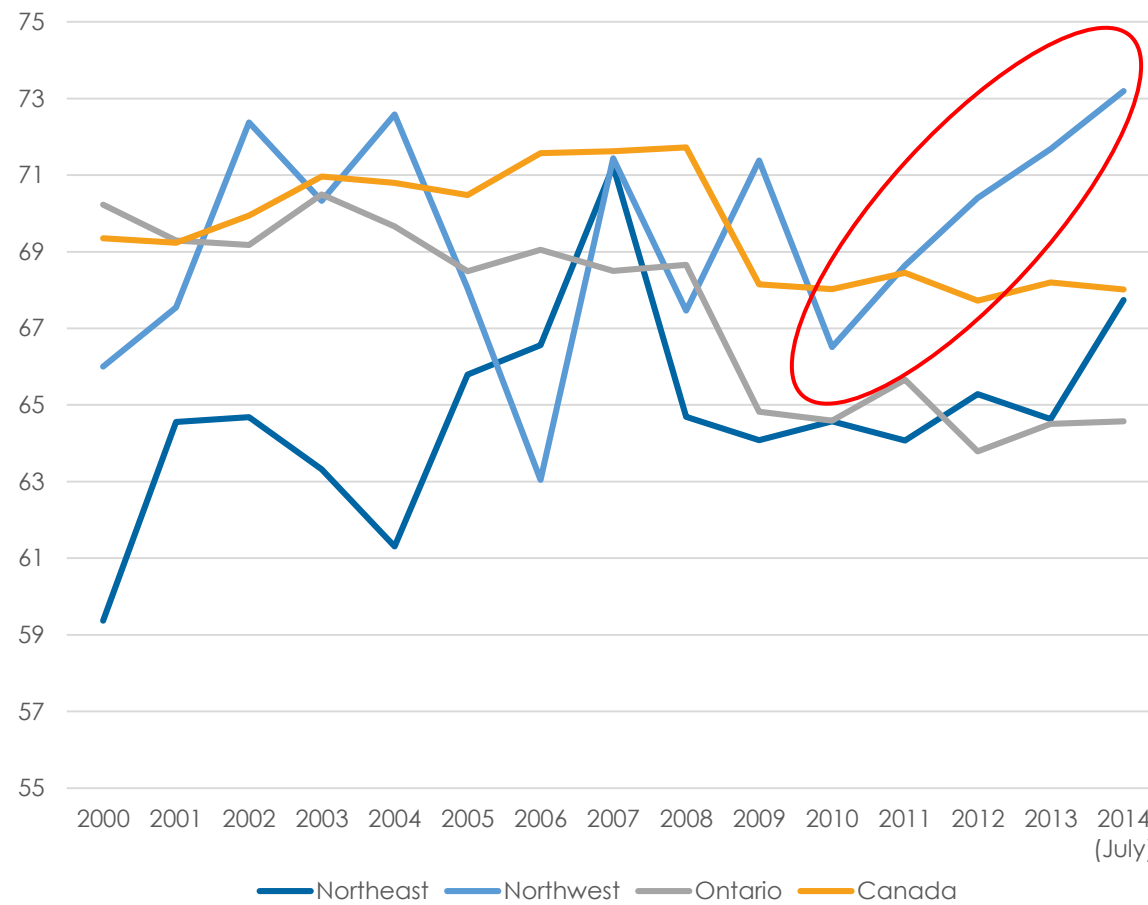


Changing DDR – The Bright Side - Youth Employment Rate

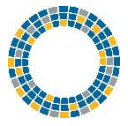
Youth Employment Rate (15 to 19 years)



Youth Employment Rate (20 to 24 years)

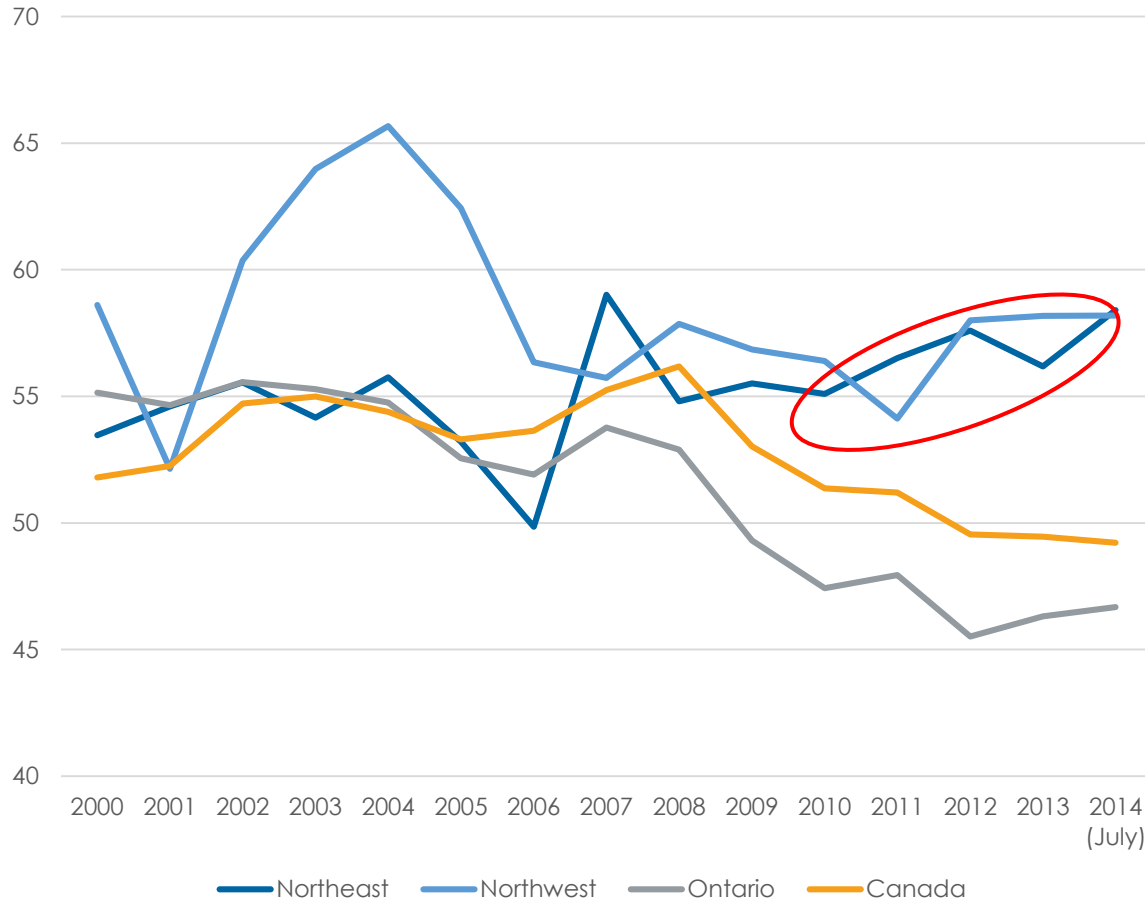


Source: Author's calculations based on Statistics Canada, custom tabulation.

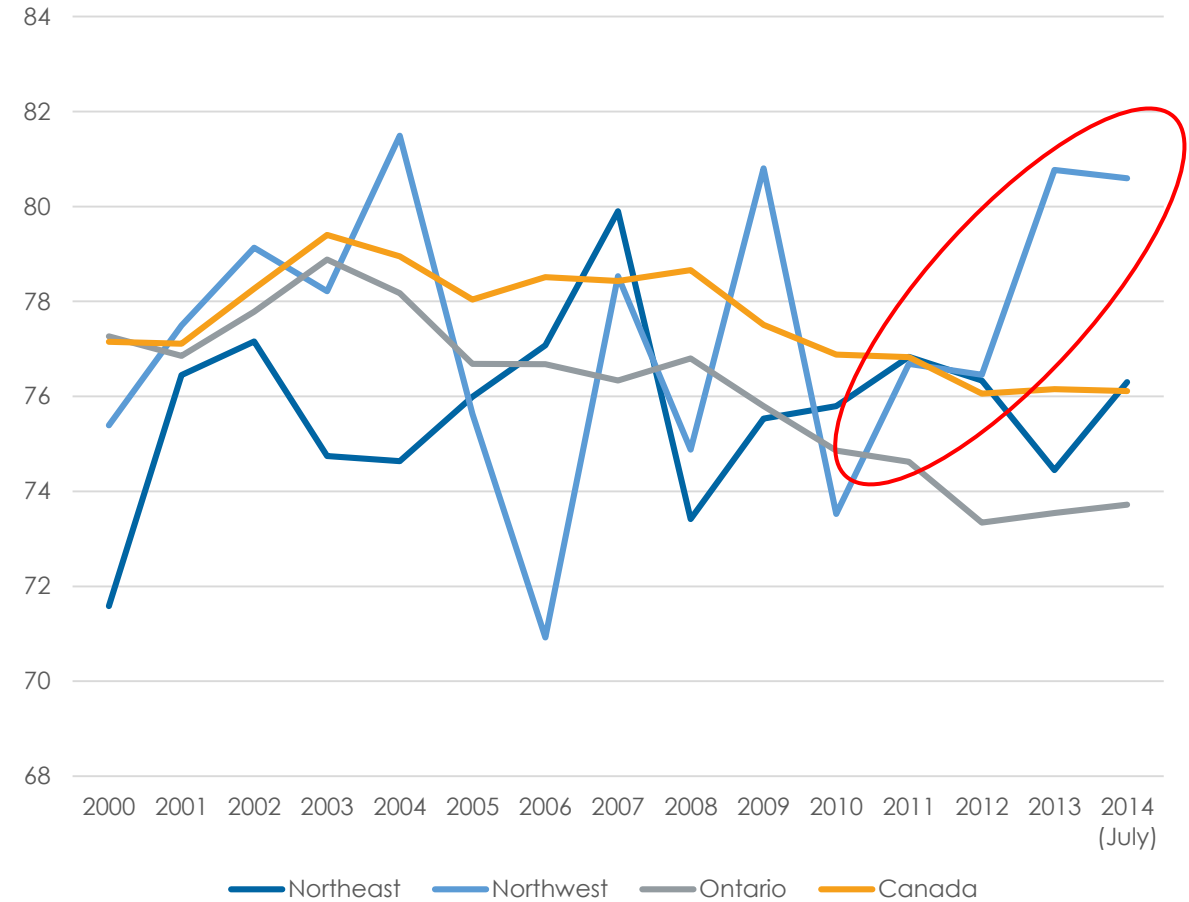


Changing DDR – The Bright Side - Youth Participation Rate

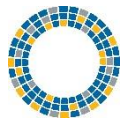
Youth Participation Rate (15 to 19 years)



Youth Participation Rate (20 to 24 years)

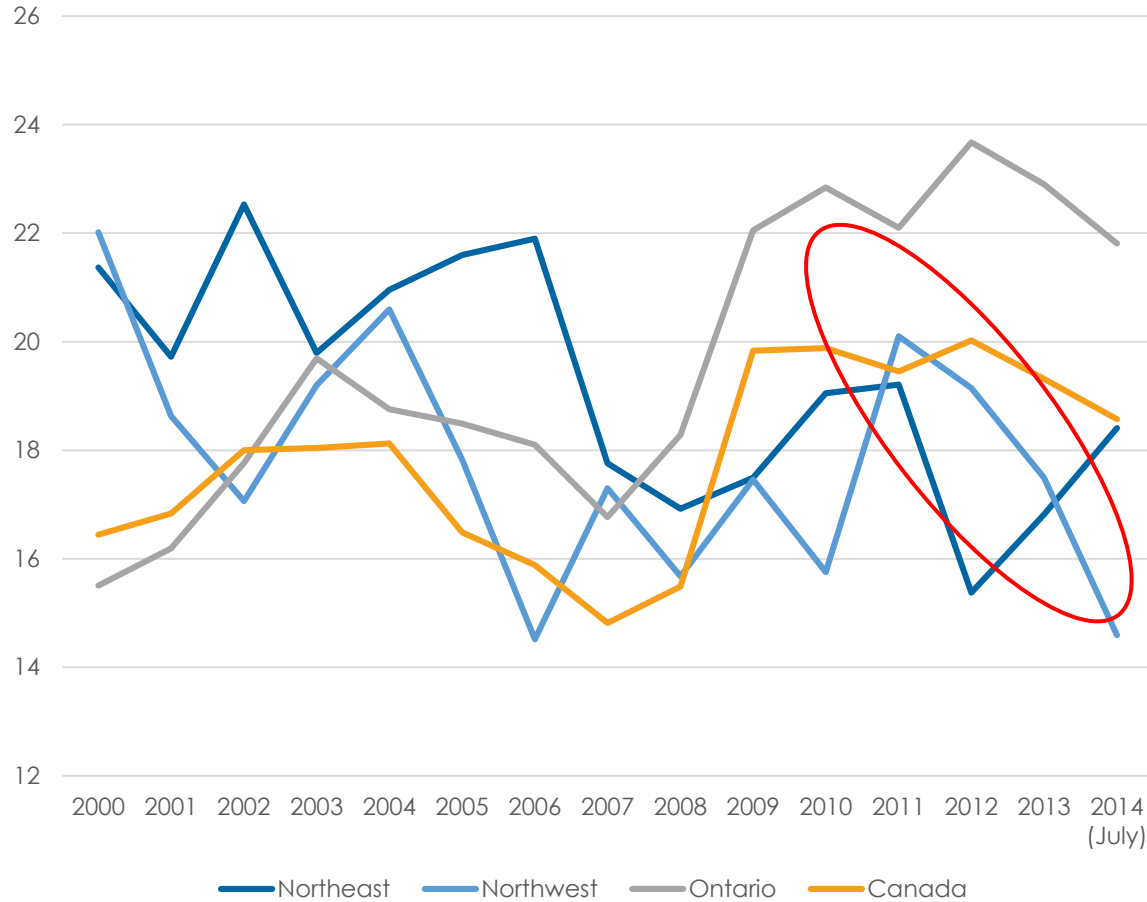


Source: Author's calculations based on Statistics Canada, custom tabulation.

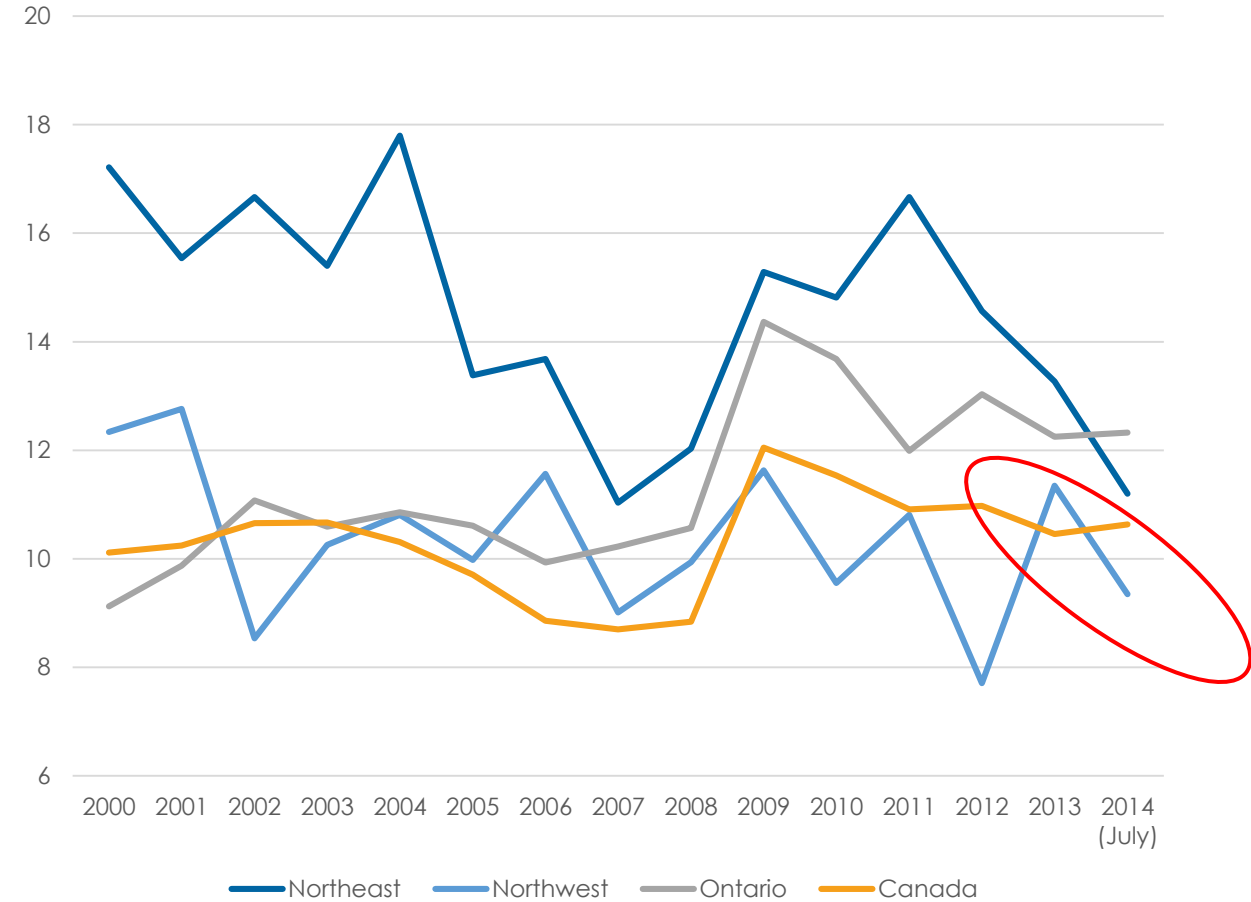


Changing DDR – The Bright Side - Youth Unemployment Rate

Youth Unemployment Rate (15 to 19 years)



Youth Unemployment Rate (20 to 24 years)



Source: Author's calculations based on Statistics Canada, custom tabulation.



Breaking down DDR

| 2014 | kenora | rainy river | thunder bay |
|----------|--------|-------------|-------------|
| under 15 | 15379 | 3424 | 21730 |
| Over 65 | 9136 | 3731 | 26823 |
| 15-64 | 45482 | 12864 | 100944 |
| DDR | 0.54 | 0.56 | 0.48 |



Breaking down DDR

| 2014 | Kenora | Rainy River | Thunder Bay |
|------------------------|--------|-------------|-------------|
| under 15 | 15379 | 3424 | 21730 |
| Over 65 | 9136 | 3731 | 26823 |
| 15-64 | 45482 | 12864 | 100944 |
| DDR | 0.54 | 0.56 | 0.48 |
| participation rate | 61.70% | 61.70% | 62.80% |
| unemployment | 7.70% | 7.70% | 6.30% |
| employment rate | 56.90% | 56.90% | 58.90% |
| 15-64 actually working | 25902 | 7326 | 59399 |
| Actual DDR | 1.70 | 1.73 | 1.52 |



Breaking down DDR

| 2014 | Kenora | Rainy River | Thunder Bay |
|-----------------------|--------|-------------|-------------|
| under 15 | 15379 | 3424 | 21730 |
| Over 65 | 9136 | 3731 | 26823 |
| 15-64 | 45482 | 12864 | 100944 |
| DDR | 0.54 | 0.56 | 0.48 |
| 65-69 | 3265 | 1171 | 8721 |
| DDR with FE AND 65-69 | 0.44 | 0.43 | 0.36 |

Thank you. Merci. Miigwetch.

NORTHERN
POLICY INSTITUTE

INSTITUT DES POLITIQUES
DU NORD

www.northernpolicy.ca