

The Joys of Landfilling – Marathon Style

Daryl Skworchinski

CAO/Clerk

TBDML – February 27, 2015

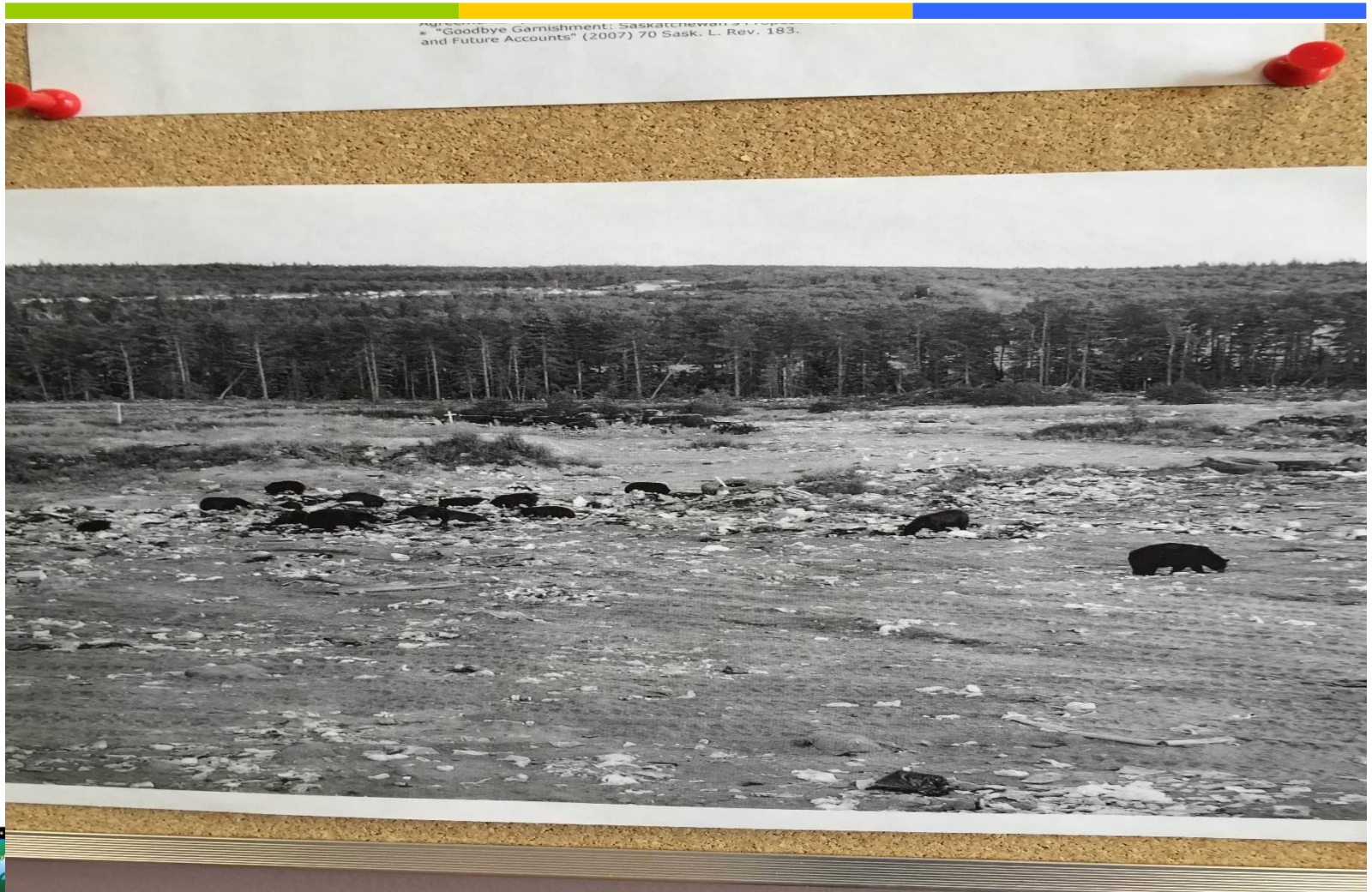


Landfilling – The Wikipedia Definition

A landfill site (also known as a tip, dump, rubbish dump or dumping ground) is a site for the disposal of waste materials by burial and is the oldest form of waste treatment. Historically, landfills have been the most common method of organized waste disposal and remain so in many places around the world.



Then...



The Notoriety...

- We made the 
- For all the wrong reasons!



We needed a plan...

- To deal with an expiring Certificate of Approval and the bear and wildlife problem.
- And...
- Develop a New Regional Landfill site.



Now...

- Curbside recycling;
- On-site recycling depot;
- On-site hazardous waste depot;
- On-site glass pulverizing;
- Tree and Yard waste disposal;
- Residential and Commercial waste disposal and on-site compaction;
- Scrap metal;
- Waste electronics (WEEE)



Now...In Colour



By the Numbers...2014

- 2072 Tonnes of garbage landfilled;
- Recycling
 - Metal – 86,670 kg
 - Blue Bags – 229,310
 - WEEE – 36,137 kg
 - Fridges/Freezers – 72 units
 - White Metal - 13,293 kg
 - Glass – 5,180 kg
 - Hazardous waste – 12,000 kg
 - Yard waste – 99,400 kg
- Total waste diverted from landfill – 489,935 kg
- 25% increase (improvement) over 2013
- Average - 159 kg of recycling per household diverted from landfill



How Much You Ask...

- Curbside recycling - \$115,000
- Hazardous Waste - \$16, 500
- Landfill Operating Cost - \$398,000
- Equipment capital expenditures - \$4M (approx.)
- Consulting and engineering (for site closure and new site development) – Approximately \$7M (2015)

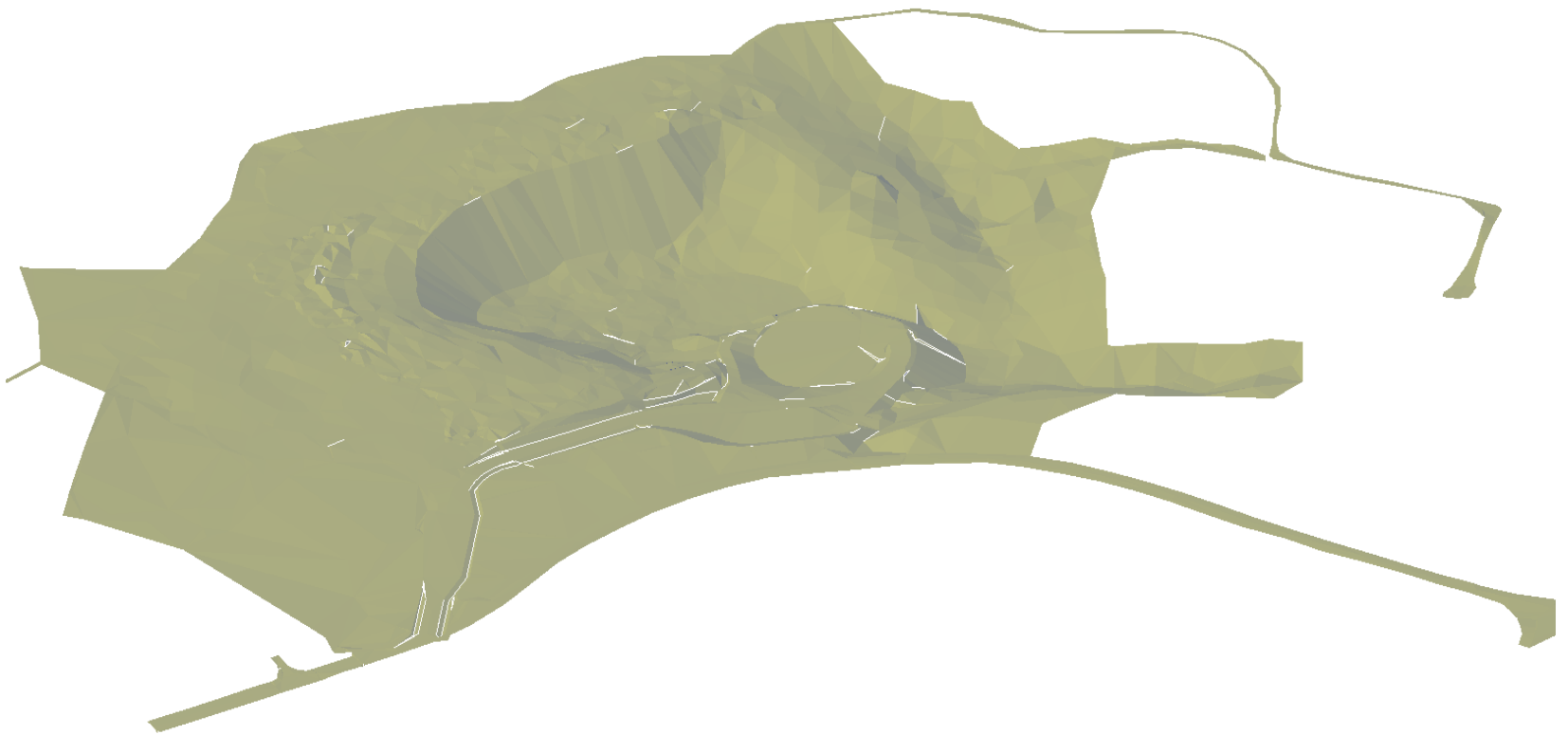


The Future...Is Bright

- Closure of the Penn Lake Landfill site by July 31, 2015.
- Development and opening of the new “RDL” landfill site - August 1, 2015!
- No worries for 134 years...



The New Site...In 3D



Lessons Learned (please read to avoid lots of stress...)

1. Begin the process WELL in advance, i.e., 15 years at a minimum.
2. If there is a REGIONAL landfill in operation, look for partnerships.
3. Don't assume the best place is going to be final place. Identify stakeholders and potential issues BEFORE you invest time and money on technical studies.
4. Build a sound reserve (\$\$\$).
5. You will learn more about landfills and landfiling than you ever thought was possible.



Thank You.

Questions and Discussion.

